



PT Global Twin Star



Global Twin Star

power utility **SOLUTION**

testing instrument

protection & control

control relay panel

high voltage equipment

testing & assement

installation &

commissioning





IN PARTNERSHIP, GLOBAL TWIN STAR PROVIDES THE
TOTAL SPECTRUM OF POWER UTILITY NEEDS IN TESTING
INSTRUMENTS, PANEL ASSEMBLY AND ENGINEERING
SERVICES FOR MEDIUM AND HIGH VOLTAGE PROTECTION
AND CONTROL PANELS.

TRUSTED PARTNER

PT GLOBAL TWIN STAR IS YOUR TRUSTED PARTNER IN GIVING THE BEST SOLUTION FOR YOU COMPANY'S POWER UTILITY NEEDS. WE PROVIDE BROAD RANGE OF HIGH QUALITY TESTING INSTRUMENTS, CONDITION BASED MONITORING/ONLINE MONITORING SYSTEM, PROTECTION AND CONTROL PANEL, ENGINEERING SUPPORTED BY ASSEMBLY FACILITIES AS WELL AS FIELD SERVICES.

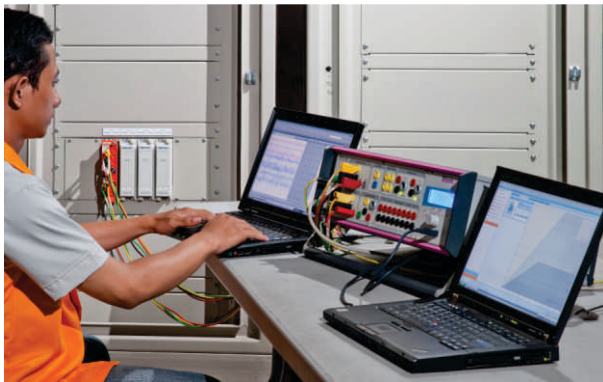


In Global Twin Star, providing a full spectrum of service is the most important key to help our Clients. We are committed to cater our Client's needs by providing the latest proven technology products and tools, and then delivering the best solution in:

1. Design and Engineering
2. Tools for Preventive Maintenance and Diagnostic/Assessment
3. Installation, Testing, Commissioning and Services

And for our Client's assurance, the after sales services includes the total spectrum mentioned.

Established in early 2008, we have been growing so fast in number of team members which work hand in hand with full competence. Each team member is professional in their field of expertise, and proud to be a part of the winning team.

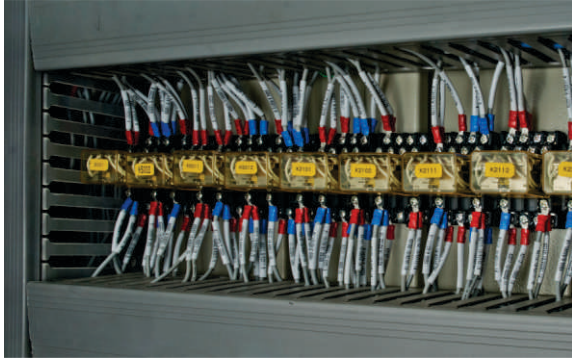


Developing a close relationship with our Client is mandatory. We believe that the process of designing begins with it, and each step afterwards is equally important to us.

1. We build active communication to understand client's preferences and needs
2. We develop the engineering system design plan and discuss the best solution for the needs
3. Once we came up with the engineering plan, we represent it to the client before the construction process begin
4. We successfully generate the component requirements and deliver them on time

GTS AS A SYSTEM INTEGRATOR

PT GLOBAL TWIN STAR IS COMMITTED TO DELIVER PRODUCTS WITH THE LATEST PROVEN TECHNOLOGY FOR OUR CLIENTS SATISFACTION.



With years of experience, reputation, and personal relationships with most of the Clients, PT Global Twin star is confident to build a mutual-benefit relationship with our partners. Our total solution is tailored on the basis of the design and technological requirements of the international market.

We maintain certain level of inventory to cover our Client's urgent needs. We also create system which are innovative, reliable, and economically competitive.

PT Global Twin Star's service spectrum includes :

- / Panel builder and panel design engineering
- / High voltage protection system and control panel for up to 500 kV applications
- / Relay setting calculation service
- / Supervision commissioning

Our expertise in Relay Protection System includes :

- / Auto Reclose
- / Busbar Protection
- / Distance Protection
- / Line Differential Protection
- / Transformer Protection
- / Transformer Differential Protection
- / Voltage & Frequency Protection
- / Motor Protection
- / Teleprotection

OUR PRODUCT AND SERVICES

Our available generic products can be listed as below:

- / On Line Transformer Monitoring
- / On Line Generator / Motor Partial Discharge Monitoring
- / Partial Discharge Monitoring
- / BHM (Bushing Health Monitoring)
- / Strategic Asset Management

High Voltage & High Power Test Equipment

- / AC Dielectric Test Mobile Unit & Portable Unit
- / DC Dielectric Test Mobile Unit & Portable Unit
- / Motor Test System / Coreloss Test / Water Break Dyno Load Test Motor
- / Transformer Test System
- / FRA (Frequency Response Analyzer)
- / AC/DC VLF Universal High Voltage Test System, 20kV XLPE Cable Test Set
- / Tan Delta Test and Partial Discharge Test
- / Breakdown Oil Analyzer
- / CT Test System Multicore, Ratio, Excitation, Burden, Polarity Test
- / Winding Resistance Test, R-DC, for Transformer
- / SF6 Gas Analyzer
- / Oil Testing Instrument for Electricity Supply
- / Automatic Relay Test
- / Breaker Analyzer
- / MicroOhm Meter
- / Digital Fault Recorder
- / Power Quality Meter
- / KWH Meter Calibrator
- / High Grade Infrared Camera
- / Battery Online Monitoring System
- / IR Glass Windows for Switchgear Thermography Inspection
- / Arcing Detector for Cubicle
- / Telescopic Stick
- / Temporary Grounding Stick for 20kV Overhead Line
- / Temporary Grounding Stick for 20kV Switchgear
- / Surge Arrester
- / Lightning Protection
- / Conductive Compound to improve your grounding grid (to get the lowest earth resistivity solution)
- / MegaOhm Meter
- / Earth Resistance Tester

- Additional Services:**
- / Medium Voltage Cable Assement
 - / Protection and Control Panel Upgrade
 - / Retrofitting Existing System
 - / Workshop Facilities for Panel Engineering, Design, Testing and Simulation

GTS TECHNICAL COURSES

PT GLOBAL TWIN STAR'S TRAINING COURSES AIMED AT THE DESIGNERS & TECHNICIANS WHO ARE RESPONSIBLE FOR THE MAINTENANCE & RUNNING OF EQUIPMENT & SYSTEM.



With a deep insight, PT Global Twin Star has a fundamental commitment to ensure that the courses and training sessions are clear and simple so that our Clients can work independently.

We equipped our team of expert trainers as mentors for our Clients, to guide a step-by-step correct usage of our products and panel system.

OUR FACILITIES



- 01 / Training Room
- 02 / Design and Engineering Room
- 03 / Assembly Area
- 04 / Testing and Simulation Workshop
- 05 / Loading Area
- 06 / Inventory Room

GTS PROJECT REFERENCES

PT GLOBAL TWIN STAR HAS A NATION WIDE PROJECT LOCATIONS. AND WE'RE STILL EXPANDING OUR NETWORK TO MEET OUR CLIENT'S LOCATIONS IN THE COUNTRY.



OUR VAST NETWORK COVERAGE :

- / Protection and Control Panel for PLN 150 kV / 70 kV (9 substation) in Palembang
- / Protection and Control Panel for PLN 500 kV / 150 kV IBT Transformer 500 kV at Cibatub Substation ,West Java
- / Protection and Control Panel for PLN 150 kV / 70 kV IBT Transformer 500 kV at Likupang Substation, North Sulawesi
- / Protection and Control Panel, Marshalling Kiosk 70 kV / 20 kV for GI Tomohon at PLN Solutenggo
- / Procurement and Installation Distance Relay 500 kV Main A (9 units) and Main B (11 units)
- / Protection and Control Panel, Marshalling Kiosk 150 kV / 20 kV for Gitet Depok at PLN P3B Jawa Bali
- / On Line Bushing Monitoring in several substation at Java - Bali
- / Protection and Control Panel for 230 kV / 115 kV North Duri Substation Chevron Pacific Indonesia at Duri, Sumatera
- / Protection and Control Panel for 115 kV / 13.8 kV Ketigul Substation CPI at Duri, Sumatera
- / Bus Coupler 150 kV, Protection and Control Panel, Marshalling Kiosk 150 kV for GI Majene at PLN Sulawesi
- / Protection and Control Panel, Marshalling Kiosk Transformer Cubicle 70 kV / 20 kV for GI Teling at PLN Solutenggo
- / Protection and Control Panel, Marshalling Kiosk Transformer Cubicle 70 kV / 20 kV for GI Sawangan, GI Bitung and GI Talise at PLN Solutenggo
- / PLC and Teleprotection Cubicle 70 kV for GI Kefamenanu - Atambua at PLN Nusa Tenggara Timur
- / Panel Synchronizing 70 kV for GI Sawangan at PLN Solutenggo
- / Assessment Cable 20 kV distribution for PLN Menteng and Bulungan area, Jakarta



PT GLOBAL TWIN STAR

Ruko Union Square No. 21

Jl. Boulevard Raya Gading Serpong

Tangerang, Indonesia 15810

Tel: +62-21-5399032, +62-21-53129050,
+62-21-53129051

Fax: +62-21-5399187

Email: info@gl2star.com

www.gl2star.com